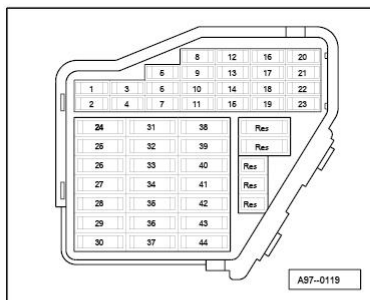


## Air conditioner with automatic control

Model year 1999

Fuse box

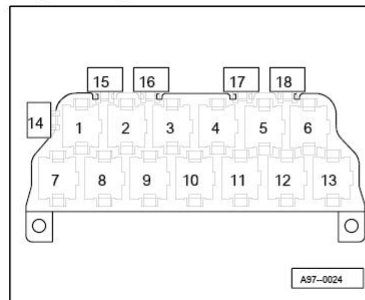


Fuse colours:

- 30 A - green
- 25 A - white
- 20 A - yellow
- 15 A - blue
- 10 A - red
- 7,5 A - brown
- 5 A - beige

From fuse number 23 upwards the fuses in the fuse box are designated as 223 etc. in the Current Flow Diagram.

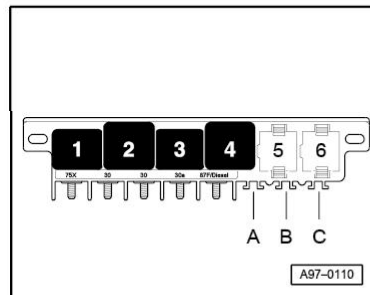
13-point relay carrier



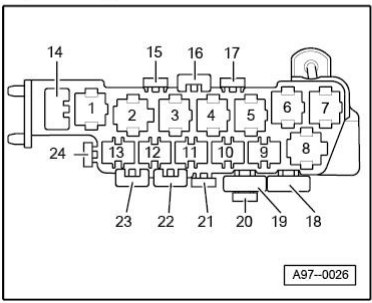
Position of relays:

- 3** - Solar cell isolation relay (J309)
- 5** - Magnetic coupling relay (J44)

Micro-central electrics



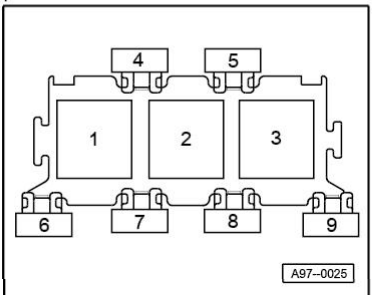
8-point relay carrier



Position of relays:

- 1** - Radiator fan run-on relay (J138)
- 2** - Radiator fan 2nd speed relay (J101)
- 3** - Radiator fan relay (J26)
- 20** - Radiator fan single fuse (S42)
- 21** - Radiator fan control unit fuse (S142)

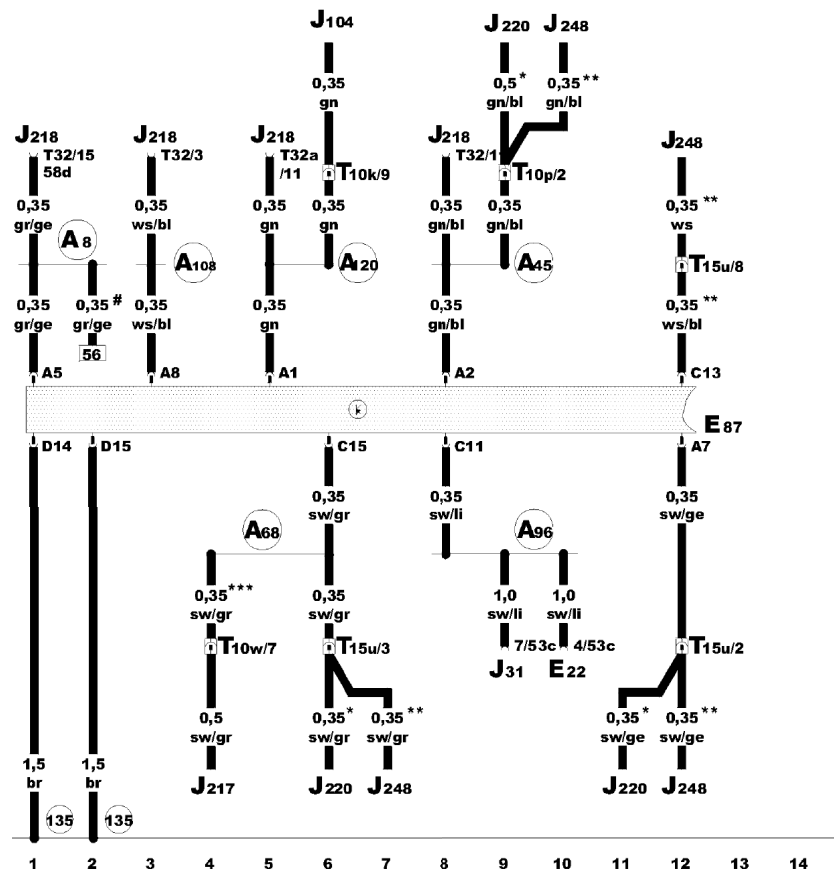
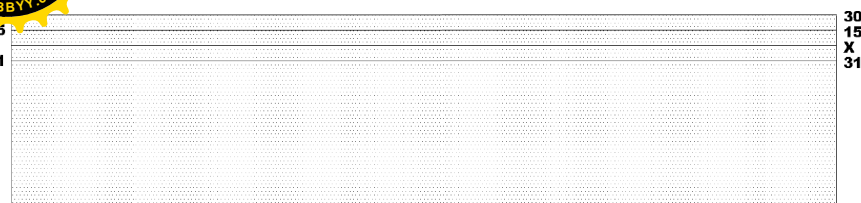
3-point relay carrier in electronics box, plenum chamber



Position of fuses:

- 5** - Engine control unit fuse (S102)

## Current Flow Diagram



ws = white  
sw = black  
ro = red  
br = brown  
gn = green  
bl = blue  
gr = grey  
li = purple  
ge = yellow  
or = orange  
rs = pink

### Air conditioner

- E22 - Intermittent wiper switch
- E87 - Control and display unit for air conditioner
- J31 - Automatic intermittent wash/wipe relay
- J104 - ABS with EDL control unit
- J217 - Automatic gearbox control unit
- J218 - Combi-processor in dash panel insert
- J220 - Motronic control unit
- J248 - Diesel direct injection system control unit
- T10k - 10-pin connector, orange, connector point, A pillar, left
- T10p - 10-pin connector, black, connector point, electronics box, plenum chamber
- T10w - 10-pin connector, blue, connector point, A pillar, right
- T15u - 15-pin connector, red, connector point, electronics box, plenum chamber
- T32 - 32-pin connector, blue, on dash panel insert
- T32a - 32-pin connector, green, on dash panel insert
- 135 - Earth connection -2-, in dash panel wiring harness
- A8 - Positive (+) connection (58d), in dash panel wiring harness (display illumination)
- A45 - Connection (engine speed signal), in dash panel wiring harness
- A68 - Connection (C15, air conditioner), in dash panel wiring harness
- A96 - Connection (53c), in dash panel wiring harness
- A108 - Connection (speed signal), in dash panel wiring harness
- A120 - Connection (stationary time), in dash panel wiring harness
- \* - Models with petrol engines
- \*\* - Models with diesel engines
- \*\*\* - Models with automatic gearbox
- # - Models without ambient temperature indicator

97-50250

## Current Flow Diagram

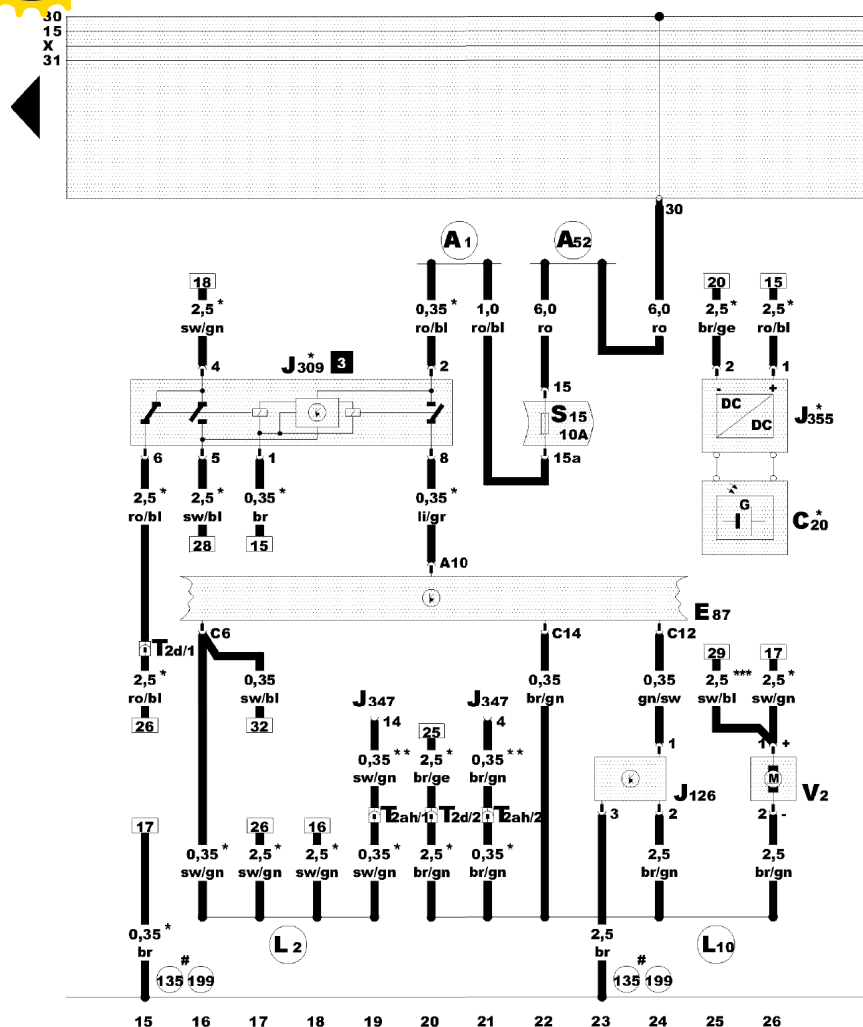
**Air conditioner, solar operation control unit, solar cell, fresh air blower control unit, fresh air blower**

- C20 - Solar cells
- E87 - Control and display unit for air conditioner
- J126 - Fresh air blower control unit
- J309 - Solar cell isolation relay
- J347 - Ultra-sonic sensor control unit
- J355 - Solar operation control unit
- S15 - Fuse in fuse box
- T2d - 2-pin connector, blue, connector point, A pillar, left
- T2ah - 2-pin connector, blue, connector point, A pillar, right
- V2 - Fresh air blower

- 135 - Earth connection -2-, in dash panel wiring harness
- 199 - Earth connection -3-, in dash panel wiring harness
- A1 - Positive (+) connection (30a), in dash panel wiring harness
- A52 - Positive (+) connection 2 (30), in dash panel wiring harness
- L2 - Connection, in air conditioner wiring harness
- L10 - Connection -2-, in air conditioner wiring harness

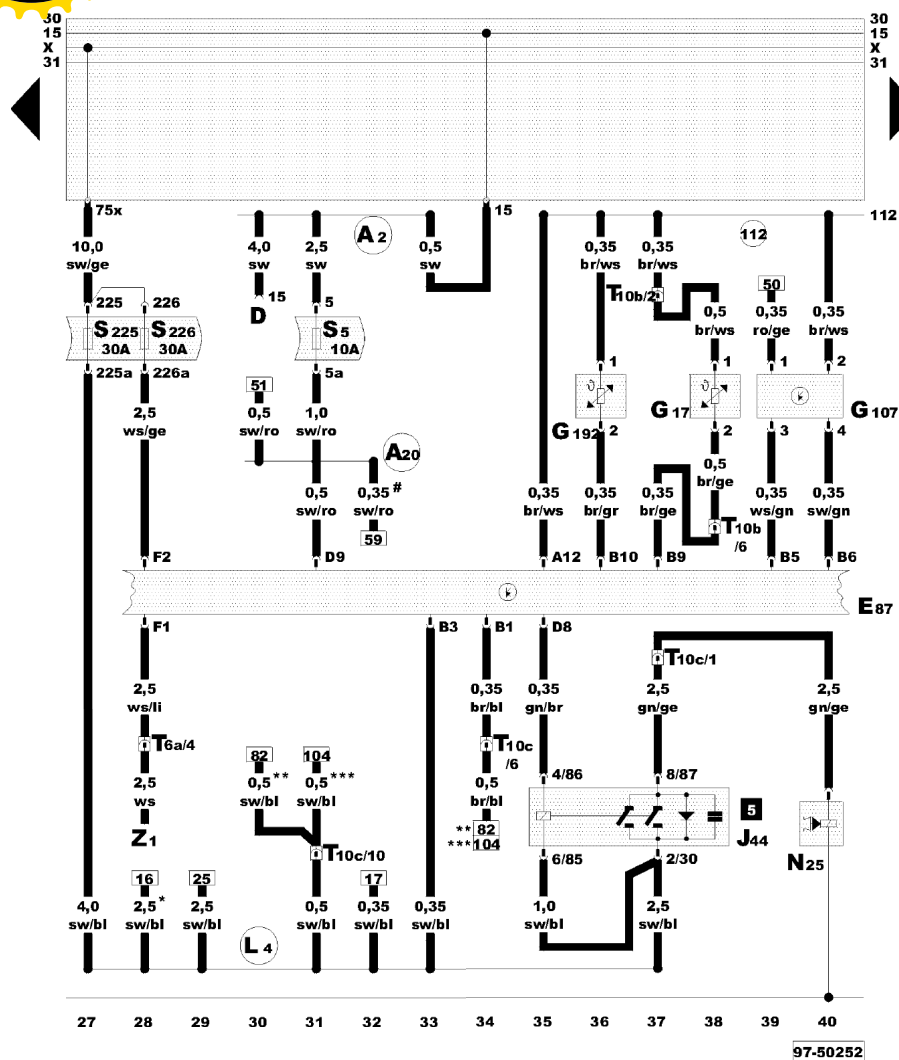
- \* - Models with solar roof
- \*\* - Models with anti-theft alarm system
- \*\*\* - Models without solar roof
- # - Both possible

ws = white  
sw = black  
ro = red  
br = brown  
gn = green  
bl = blue  
gr = grey  
li = purple  
ge = yellow  
or = orange  
rs = pink



97-50251

### Current Flow Diagram

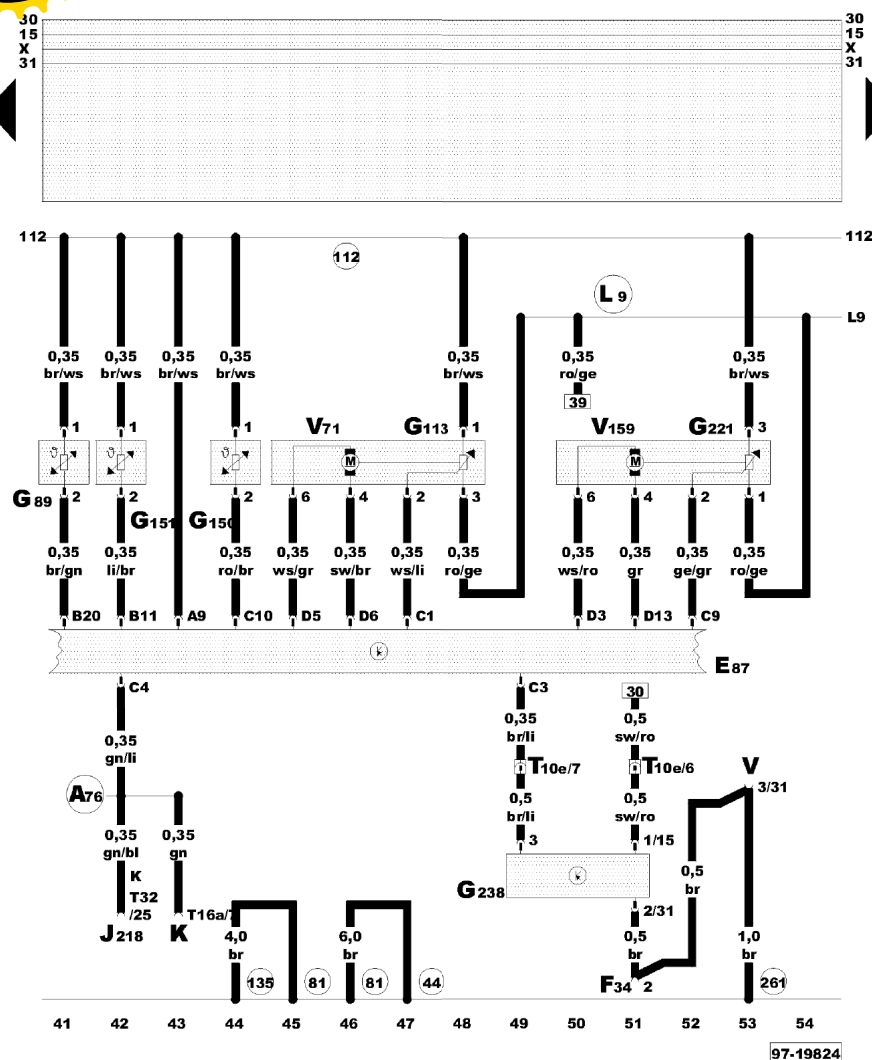


ws = white  
sw = black  
ro = red  
br = brown  
gn = green  
bl = blue  
gr = grey  
li = purple  
ge = yellow  
or = orange  
rs = pink

**Air conditioner, ambient temperature sensor, sunlight penetration photo sensor, magnetic coupling relay**

- |      |   |
|------|---|
| D    | - Ignition/starter switch                                     |
| E87  | - Control and display unit for air conditioner                |
| G17  | - Ambient temperature sensor                                  |
| G107 | - Sunlight penetration photo sensor                           |
| G192 | - Vent temperature sender, footwell                           |
| J44  | - Magnetic coupling relay                                     |
| N25  | - Air conditioning system magnetic coupling                   |
| S5   | - Fuse in fuse box  |
| S225 | - Fuse in fuse box  |
| S226 | - Fuse in fuse box  |
| T6a  | - 6-pin connector, blue, connector point, A pillar, left      |
| T10b | - 10-pin connector, red, connector point, A pillar, left      |
| T10c | - 10-pin connector, grey, connector point, A pillar, left     |
| Z1   | - Heated rear window  |
| 112  | - Earth connection -2-, in air conditioner wiring harness     |
| A2   | - Positive (+) connection (15), in dash panel wiring harness  |
| A20  | - Positive (+) connection (15a), in dash panel wiring harness |
| L4   | - Connection (75 al), in air conditioner wiring harness       |
| *    | - Models with solar roof                                      |
| **   | - Models with petrol engines                                  |
| ***  | - Models with diesel engines                                  |
| #    | - Models with ambient temperature indicator                   |

### Current Flow Diagram

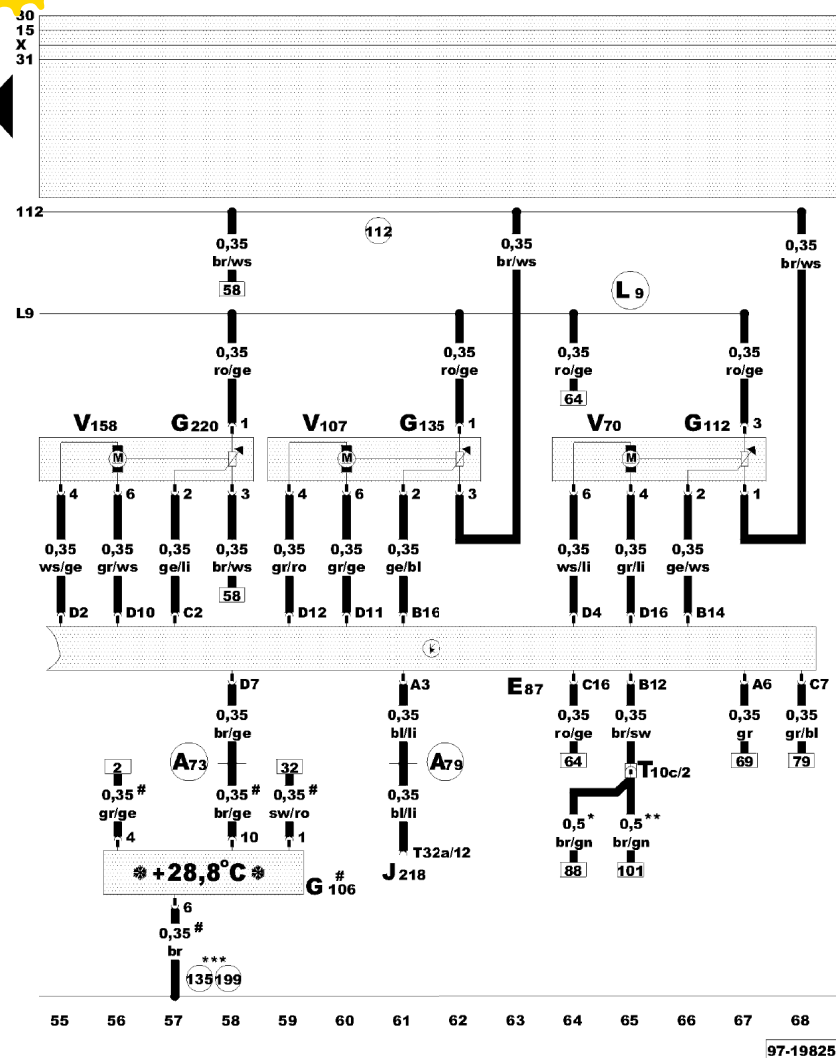


ws = white  
sw = black  
ro = red  
br = brown  
gn = green  
bl = blue  
gr = grey  
li = purple  
ge = yellow  
or = orange  
rs = pink

**Air conditioner, fresh air temperature sensor, vent temperature sender, flow flap control motor and temperature flap, air quality sensor**

- E87 - Control and display unit for air conditioner
- F34 - Brake fluid level warning contact
- G89 - Fresh air intake duct temperature sensor
- G113 - Control motor potentiometer, air flow flap
- G150 - Left vent temperature sender
- G151 - Right vent temperature sender
- G221 - Control motor potentiometer, right temperature flap
- G238 - Air quality sensor
- J218 - Combi-processor in dash panel insert
- K - Diagnosis connection
- T10e - 10-pin connector, purple, connector point, A pillar, left
- T16a - 16-pin connector, diagnosis connection
- T32 - 32-pin connector, blue, on dash panel insert
- V - Windscreen wiper motor
- V71 - Air flow flap control motor
- V159 - Temperature flap control motor, right
- 44 - Earth point, lower part of left A-pillar
- 81 - Earth connection -1-, in dash panel wiring harness
- 112 - Earth connection -2-, in air conditioner wiring harness
- 135 - Earth connection -2-, in dash panel wiring harness
- 261 - Earth connection, in heated washer jet wiring harness
- A76 - Connection (diagnosis wire K), in dash panel wiring harness
- L9 - Connection -1-, in air conditioner wiring harness

## Current Flow Diagram



## Air conditioner, temperature flap control motor, left, for defroster flap central flap, ambient temperature indicator

- E87 - Control and display unit for air conditioner/Climatronic
- G106 - Ambient temperature indicator
- G112 - Control motor potentiometer, central flap
- G135 - Control motor potentiometer, defroster flap
- G220 - Control motor potentiometer, left temperature flap
- J218 - Combi-processor in dash panel insert
- T10c - 10-pin connector, grey, connector point, A pillar, left
- T32a - 32-pin connector, green, on dash panel insert
- V70 - Central flap control motor
- V107 - Defroster flap control motor
- V158 - Temperature flap control motor, left
- 112 - Earth connection -2-, in air conditioner wiring harness

135 - Earth connection -2-, in dash panel wiring harness

199 - Earth connection -3-, in dash panel wiring harness

A73 - Connection (ambient temperature display), in dash panel wiring harness

A79 - Connection (hot light switch), in dash panel wiring harness

L9 - Connection -1-, in air conditioner wiring harness

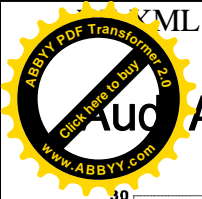
\* - Models with petrol engines

\*\* - Models with diesel engines

\*\*\* - Both possible

# - Models with ambient temperature indicator

ws = white  
sw = black  
ro = red  
br = brown  
gn = green  
bl = blue  
gr = grey  
li = purple  
ge = yellow  
or = orange  
rs = pink



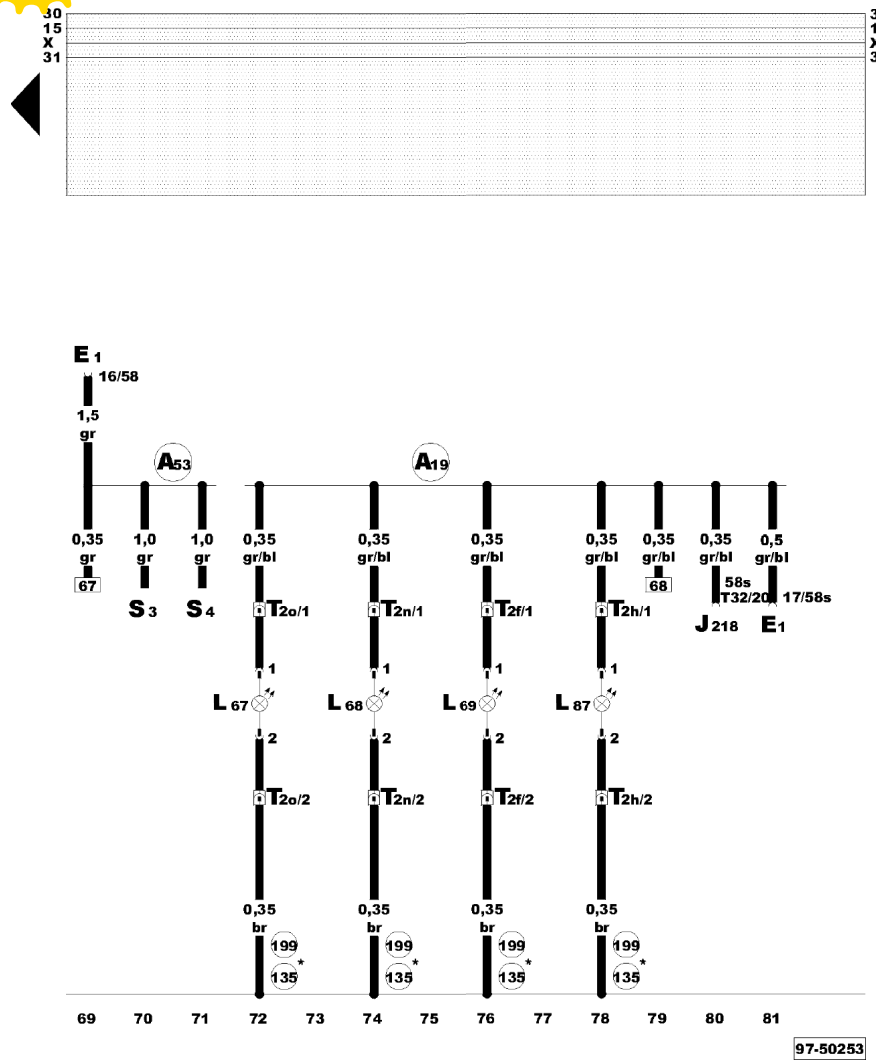
A6

# Current Flow Diagram

No.

## Air conditioner, dash panel left vent illumination and rear vent

- E1 - Lighting switch
- J218 - Combi-processor in dash panel insert
- L67 - Dash panel left vent illumination
- L68 - Dash panel central vent illumination
- L69 - Dash panel right vent illumination
- L87 - Central rear vent illumination
- S3 - Fuse in fuse box
- S4 - Fuse in fuse box
- T2f - 2-pin connector, brown, behind dash panel, right
- T2h - 2-pin connector, black, in centre console
- T2n - 2-pin connector, brown, behind dash panel, centre
- T2o - 2-pin connector, brown, behind dash panel, left
- T32 - 32-pin connector, blue, on dash panel insert
- 135 - Earth connection -2-, in dash panel wiring harness
- 199 - Earth connection -3-, in dash panel wiring harness
- A19 - Connection (58s), in dash panel wiring harness (switch illumination)
- A53 - Positive (+) connection (58), in dash panel wiring harness
- \* - Both possible



ws = white  
sw = black  
ro = red  
br = brown  
gn = green  
bl = blue  
gr = grey  
li = purple  
ge = yellow  
or = orange  
rs = pink

97-50253



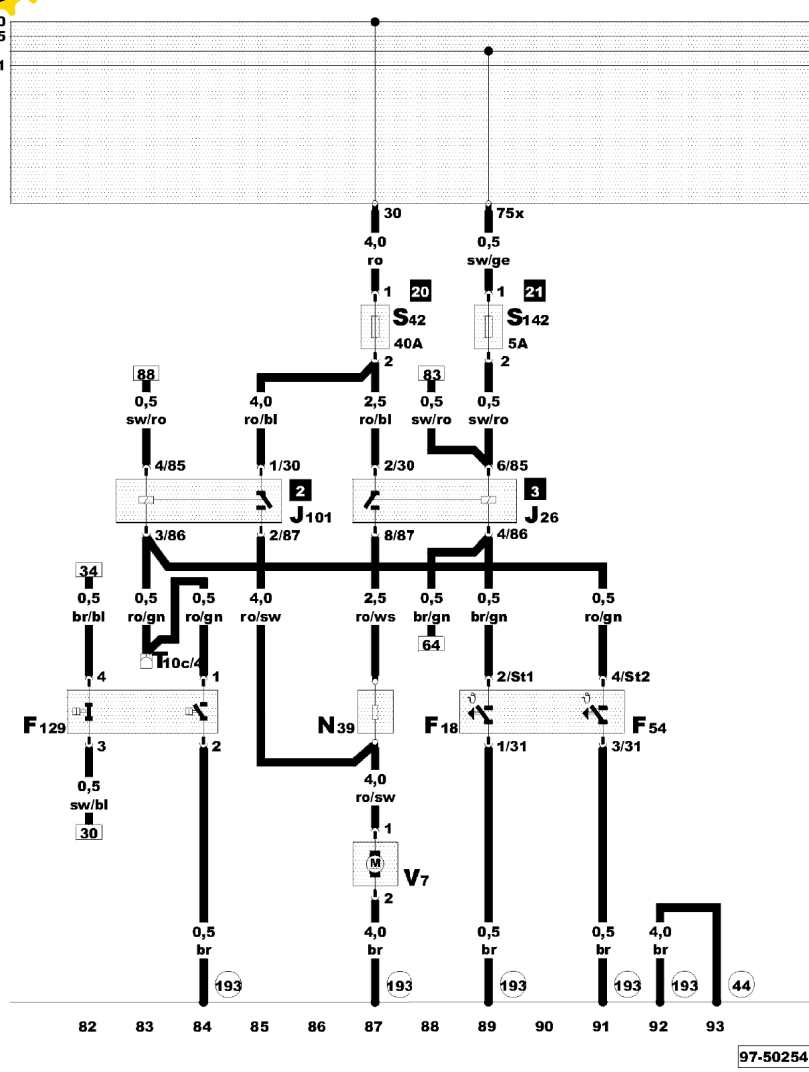
Aud A6

# Current Flow Diagram

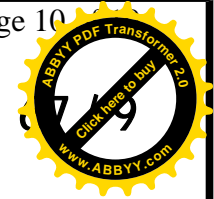
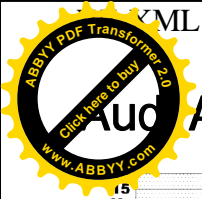
No. 7/18

## Air conditioner, engine cooling petrol engines

- F18 - Radiator fan thermo-switch
- F54 - Radiator fan thermo-switch
- F129 - Air conditioner pressure switch
- J26 - Radiator fan relay
- J101 - Radiator fan 2nd speed relay
- N39 - Radiator fan series resistor
- S42 - Radiator fan single fuse
- S142 - Radiator fan control unit fuse
- T10c - 10-pin connector, grey, connector point, A pillar, left
- V7 - Radiator fan
- 44 - Earth point, lower part of left A-pillar
- 193 - Earth connection -1-, in coolant fan wiring harness



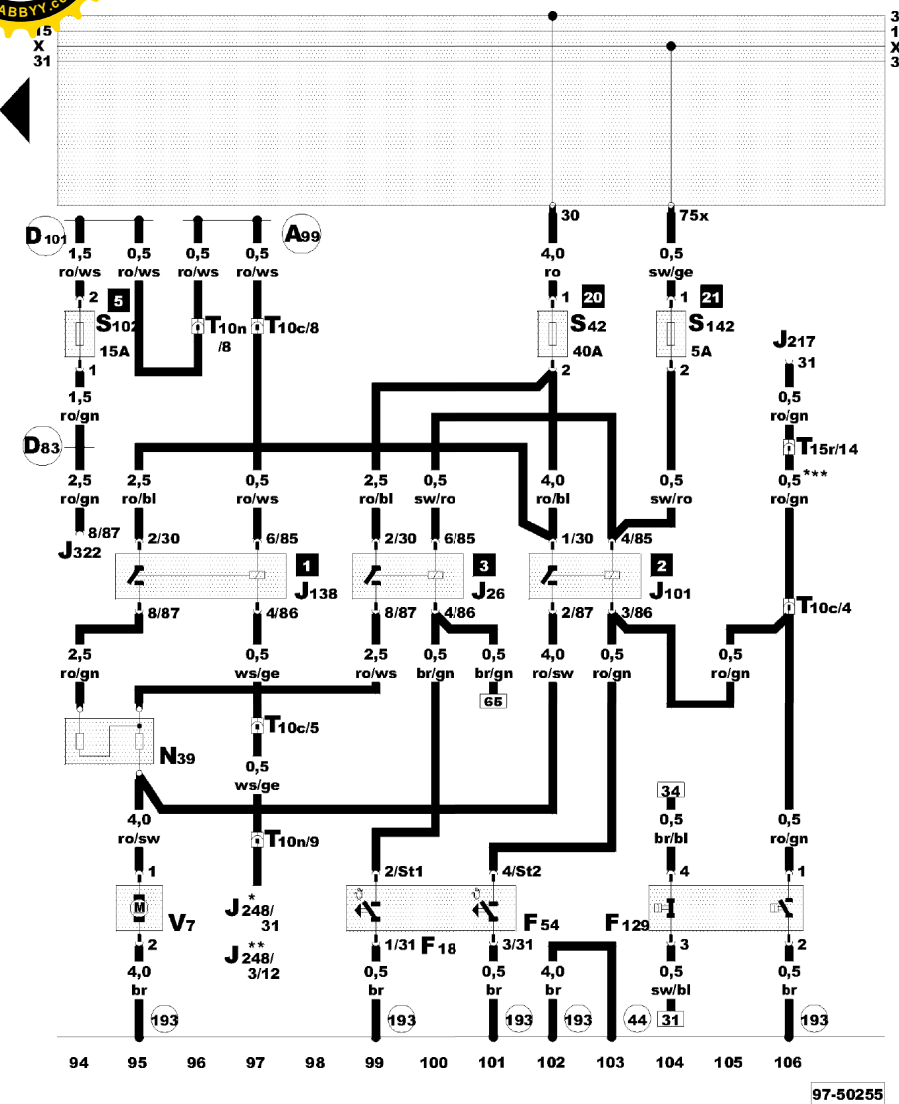
ws = white  
sw = black  
ro = red  
br = brown  
gn = green  
bl = blue  
gr = grey  
li = purple  
ge = yellow  
or = orange  
rs = pink



A6

# Current Flow Diagram

No.



- ws = white
- sw = black
- ro = red
- br = brown
- gn = green
- bl = blue
- gr = grey
- li = purple
- ge = yellow
- or = orange
- rs = pink

## Air conditioner, engine cooling diesel engines

- F18 - Radiator fan thermo-switch
- F55 - Oil temperature switch
- F129 - Air conditioner pressure switch
- J26 - Radiator fan relay
- J101 - Radiator fan 2nd speed relay
- J138 - Radiator fan run-on control unit
- J217 - Automatic gearbox control unit
- J248 - Diesel direct injection system control unit
- J322 - Diesel direct injection system relay
- N39 - Radiator fan series resistor
- S42 - Radiator fan single fuse
- S102 - Engine control unit fuse
- S142 - Radiator fan control unit fuse
- T10c - 10-pin connector, grey, connector point, A pillar, left
- T10n - 10-pin connector, orange, connector point, electronics box, plenum chamber
- T15r - 15-pin connector, brown, connector point, right A pillar
- V7 - Radiator fan
- 44 - Earth point, lower part of left A-pillar
- 193 - Earth connection -1-, in coolant fan wiring harness
- A99 - Connection -1- (87), in dash panel wiring harness
- D83 - Connection (87), in engine compartment wiring harness
- D101 - Connection -1-, in engine compartment wiring harness
- \* - Models with 4 cylinder TDI-engine
- \*\* - Models with 4 cylinder TDI-engine
- \*\*\* - Models with automatic gearbox 01N

97-50255